

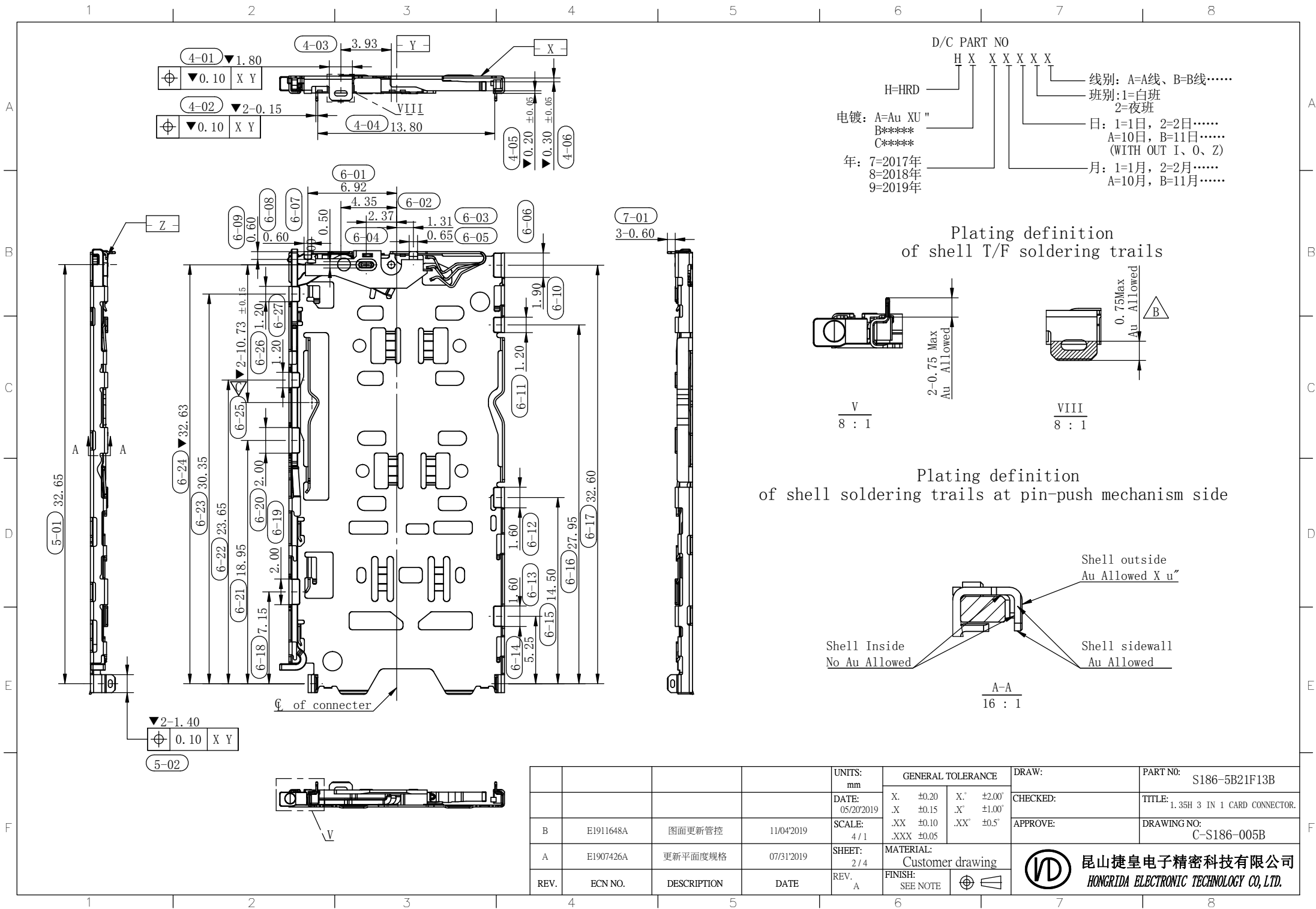
- NOTES:
- Finish
 - Contact:
 - Switch Area: 15u" Au Min;
 - Gold Flash on soldering area, 3~8u" Min.
 - Shell:
 - Soldering Area: 3~8u" Au Min.
 - Electical requirements:
 - Current rating: 0.3A per pin
 - Current voltage: 10V AC
 - Contact resistanc:
 - Switch contact initial 150mohm Max, After test: 175mohm Max.
 - Insulation resistance: 1 GOhm Min. 500VDC for 2 minutes.
 - Mechanical requirements:
 - Tray mating force: 12N Max. (with card);
Tray un-mating force: 4N Min (without card)
Tray ejection force: 15N Max. (with card)
 - Durability: 3000 cycles Min.
 - Environment requirements:
 - Operating temperature: -40° C to +85° C
 - Storage temperature: -40° C to +85° C
 - Burr: 0.02mm Max.
 - Dimensions with mark "▼" indicate the critical dimensions.
"▽" is CPK DIMENSIONS.

ITEM	NAME	Q' TY	MATERIAL	PLATING
4	Pusher	1	SUS304-3/4H T=0.50mm	N/A
3	Crank	1	SUS304-3/4H T=0.40mm	N/A
2	Switch-Housing	1	LCP, UL94V-0, Black	N/A
	Switch-Detect	1	C7025-TM03 T=0.12mm	15u" Au plating on switch area 50~300u" Ni plating overall
1	Shell	1	SUS304-3/4H T=0.15mm	15u" Au plating on switch area 50~300u" Ni plating overall

▽	▼0.06	Before IR
▽	▼0.08	After IR

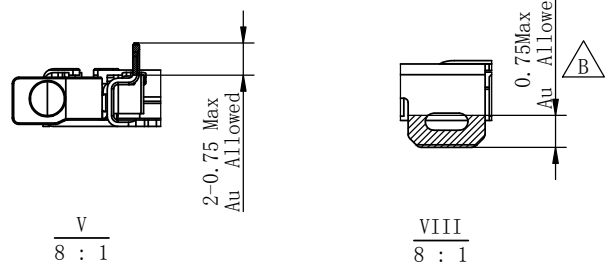
REV.	ECN NO.	DESCRIPTION	DATE	UNITS: mm	GENERAL TOLERANCE	DRAW:	PART NO:
				DATE: 05/20/2019	X. ±0.20 .X ±0.15 .XX ±0.10 .XXX ±0.05	CHECKED:	S186-5B21F13B
B	E1911648A	图面更新管控	11/04/2019	SCALE: 4/1	X' ±2.00 .X' ±1.00 .XX' ±0.5'	APPROVE:	TITLE: 1.35H 3 IN 1 CARD CONNECTOR.
A	E1907426A	更新平面度规格	07/31/2019	SHEET: 1/4	MATERIAL: Customer drawing		DRAWING NO: C-S186-005B
				REV. A	FINISH: SEE NOTE		



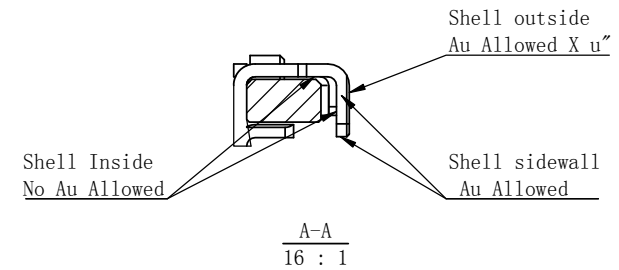



D/C PART NO
 H X X X X X
 H=HRD
 电镀: A=Au XU"
 B*****
 C*****
 年: 7=2017年
 8=2018年
 9=2019年
 线别: A=A线、B=B线.....
 班别: 1=白班
 2=夜班
 日: 1=1日, 2=2日.....
 A=10日, B=11日.....
 (WITH OUT 1, 0, Z)
 月: 1=1月, 2=2月.....
 A=10月, B=11月.....

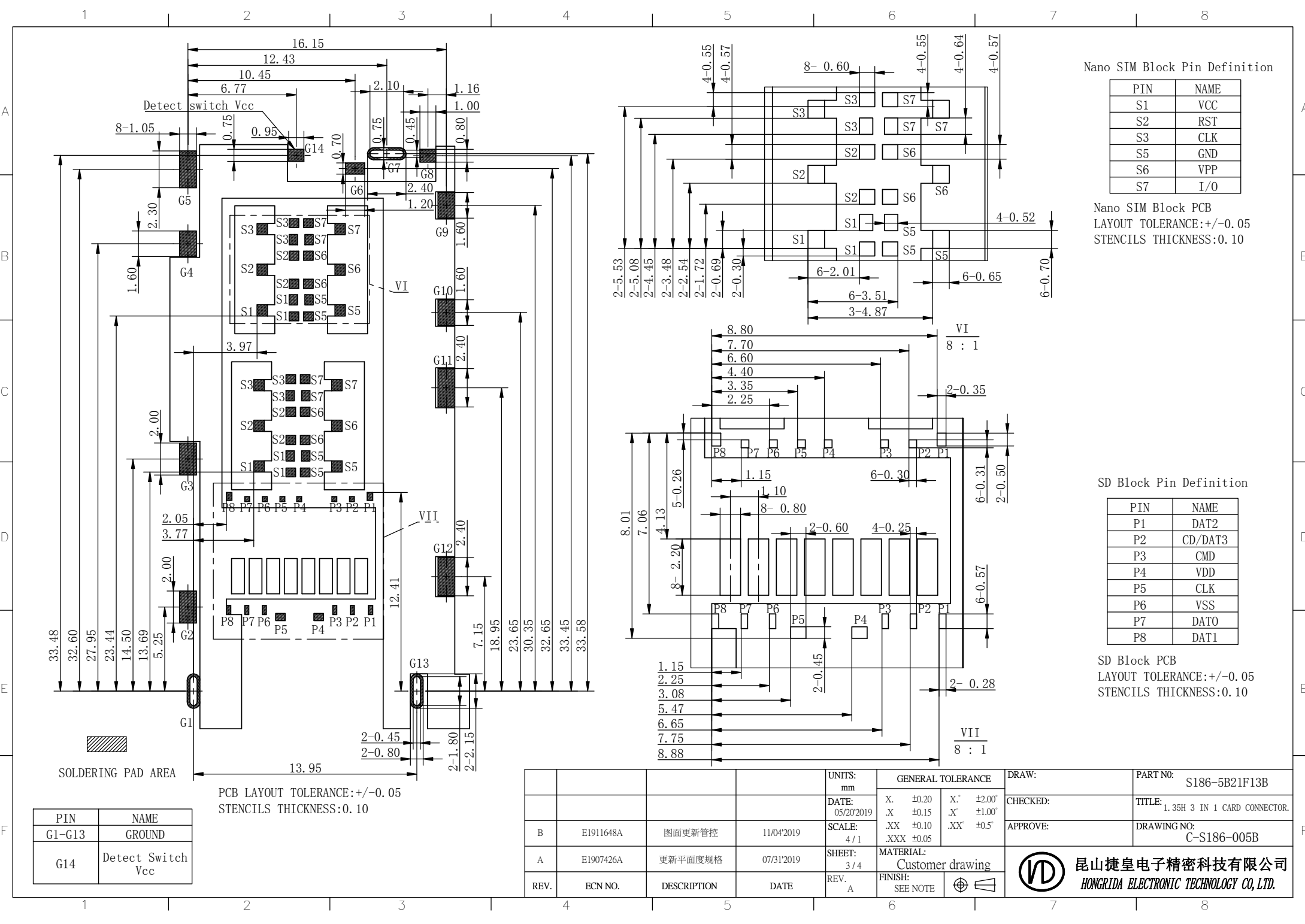
Plating definition of shell T/F soldering trails



Plating definition of shell soldering trails at pin-push mechanism side



				UNITS: mm	GENERAL TOLERANCE	DRAW:	PART NO: S186-5B21F13B
				DATE: 05/20/2019	X. ±0.20 .X' ±0.15 .XX ±0.10 .XXX ±0.05	CHECKED:	TITLE: 1.35H 3 IN 1 CARD CONNECTOR.
B	E1911648A	图面更新管控	11/04/2019	SCALE: 4/1	.X' ±0.20 .XX' ±0.5"	APPROVE:	DRAWING NO: C-S186-005B
A	E1907426A	更新平面度规格	07/31/2019	SHEET: 2/4	MATERIAL: Customer drawing	 昆山捷皇电子精密科技有限公司 HONGRIDA ELECTRONIC TECHNOLOGY CO., LTD.	
REV.	ECN NO.	DESCRIPTION	DATE	REV. A	FINISH: SEE NOTE		



Nano SIM Block Pin Definition

PIN	NAME
S1	VCC
S2	RST
S3	CLK
S5	GND
S6	VPP
S7	I/O

Nano SIM Block PCB
 LAYOUT TOLERANCE: +/-0.05
 STENCILS THICKNESS:0.10

SD Block Pin Definition

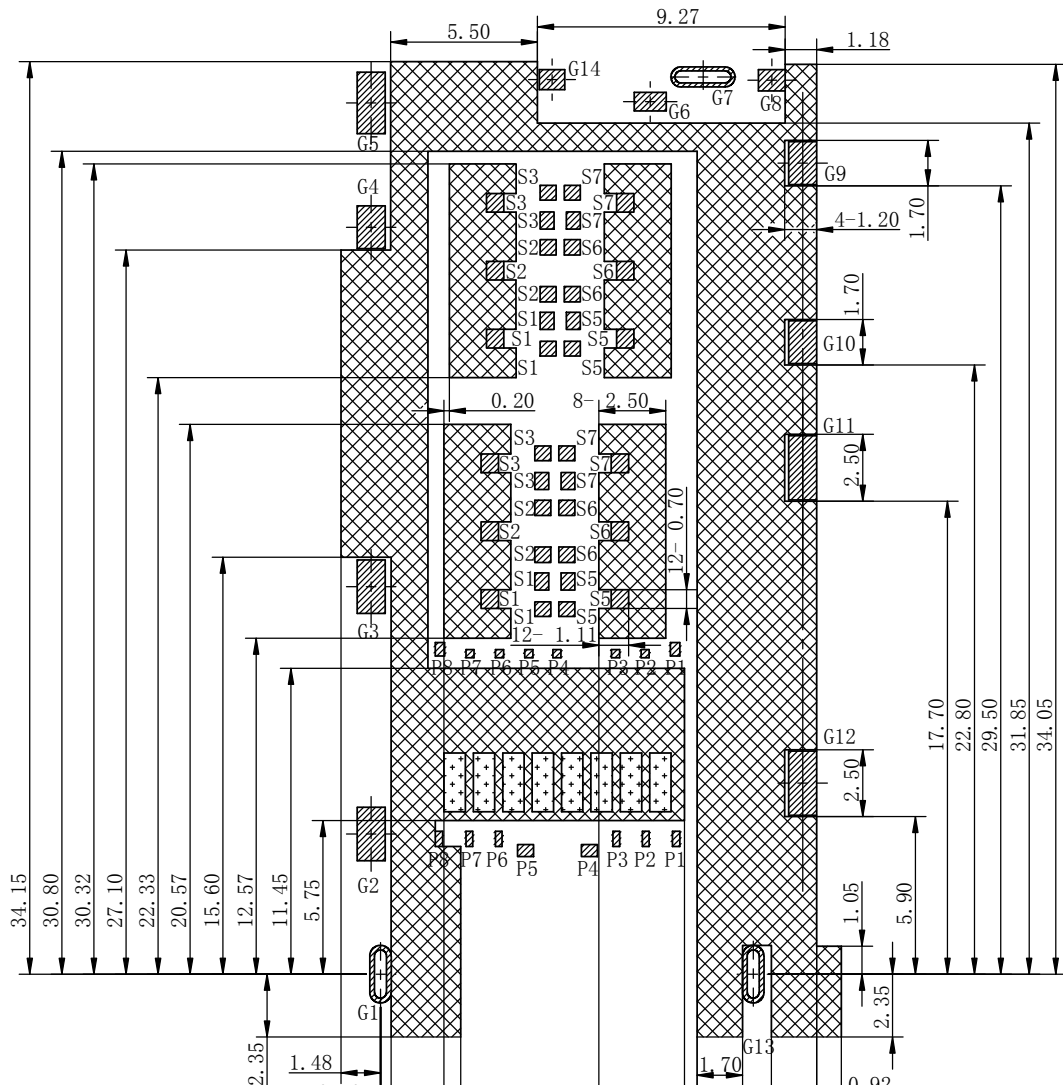
PIN	NAME
P1	DAT2
P2	CD/DAT3
P3	CMD
P4	VDD
P5	CLK
P6	VSS
P7	DAT0
P8	DAT1

SD Block PCB
 LAYOUT TOLERANCE: +/-0.05
 STENCILS THICKNESS:0.10

PIN	NAME
G1-G13	GROUND
G14	Detect Switch Vcc

PCB LAYOUT TOLERANCE: +/-0.05
 STENCILS THICKNESS:0.10

UNITS: mm	GENERAL TOLERANCE	DRAW:	PART NO:
DATE: 05/20/2019	X. ±0.20 X.' ±2.00	CHECKED:	S186-5B21F13B
SCALE: 4/1	.X ±0.15 .X' ±1.00	APPROVE:	TITLE: 1.35H 3 IN 1 CARD CONNECTOR.
SHEET: 3/4	.XX ±0.10 .XX' ±0.5		DRAWING NO: C-S186-005B
REV. A	MATERIAL: Customer drawing	昆山捷皇电子精密科技有限公司 HONGRIDA ELECTRONIC TECHNOLOGY CO., LTD.	
ECN NO.	FINISH: SEE NOTE		
DESCRIPTION			
DATE			



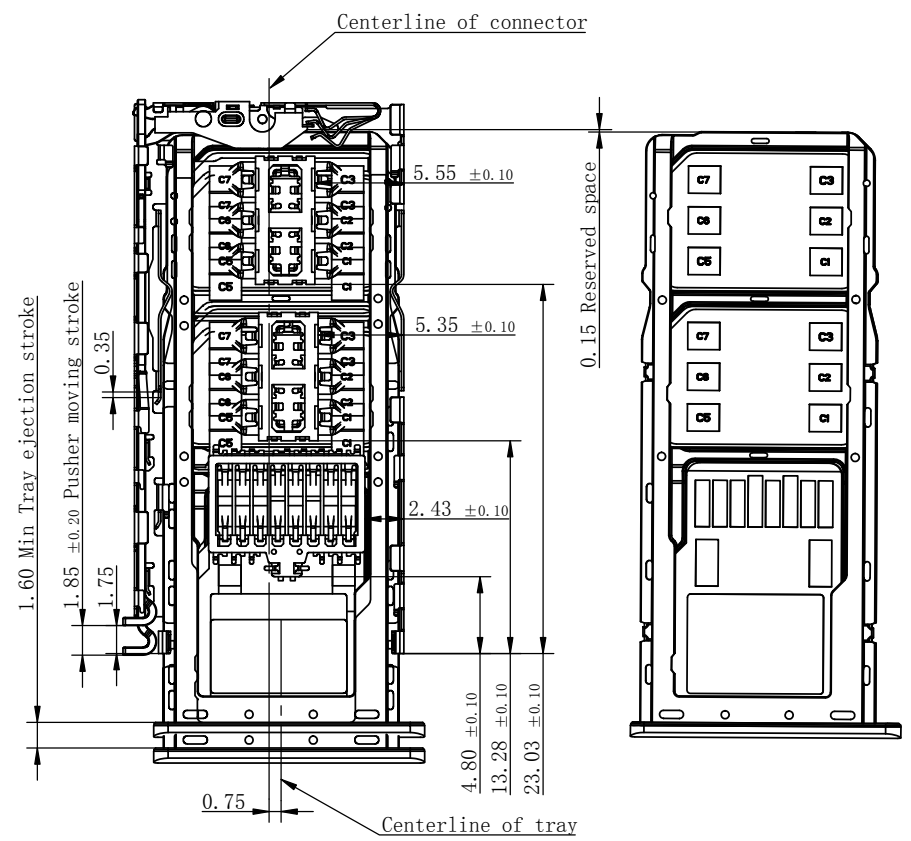
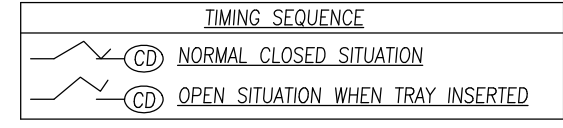
RECOMMENDED PCB LAYOUT
(NO PATTERNS)
(TOLERANCE: +/-0.05)

SOLDERING PAD AREA

NO PATTERNS

KEEP OUT AREA

- 1.Touch area of contact tips, no electrical function and only for mechanical function.
- 2.No first PCB-Layercircuit in the area.



Assembly with SIM block & SD block

				UNITS: mm	GENERAL TOLERANCE		DRAW:	PART NO: S186-5B21F13B
				DATE: 05/20/2019	X. ±0.20 .X ±0.15 .XX ±0.10 .XXX ±0.05	X.' ±2.00 .X' ±1.00 .XX' ±0.5'	CHECKED:	TITLE: 1.35H 3 IN 1 CARD CONNECTOR.
B	E1911648A	图面更新管控	11/04/2019	SCALE: 4/1			APPROVE:	DRAWING NO: C-S186-005B
A	E1907426A	更新平面度规格	07/31/2019	SHEET: 4/4	MATERIAL: Customer drawing		昆山捷皇电子精密科技有限公司 HONGRIDA ELECTRONIC TECHNOLOGY CO., LTD.	
REV.	ECN NO.	DESCRIPTION	DATE	REV. A	FINISH: SEE NOTE			